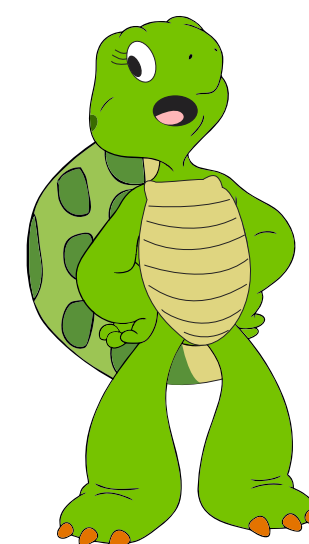


# Road Safety



**"Driving faster doesn't make you a better driver, it just makes you a faster accident. If you don't wear a helmet, you're a melon waiting to be smashed."**



No Entry



One Way



No Right Turn



No Left Turn



Horn Prohibited



Speed Limit



Cycle Prohibited

All Motor  
Vehicles  
ProhibitedPedestrian  
Prohibited

No Parking



No Overtaking



School Ahead



Cattle Ahead

Pedestrian  
Crossing

People at Work

Cycle  
Crossing

Speed Breaker



Loose Gravel



Barrier Ahead



Steep Ascent



Steep Descent



Hump Road



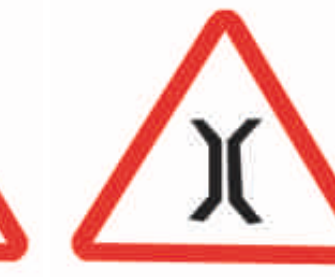
Dangerous Dip



Slippery Road



Falling Rocks

Right Hand  
CurveLeft Hand  
CurveRight Hand  
Pin BendLeft Hand  
Pin BendNarrow Road  
Ahead

Narrow Bridge



Y Intersection



Y Intersection



Roundabout



T Intersection

Road Widens  
AheadDual Carriageway  
EndsUnguarded Rly  
CrossingGuarded Rly  
CrossingCompulsory  
CycleTrackCompulsory Right  
TurnCompulsory Left  
TurnCompulsory Keep  
leftCompulsory Sound  
Horn

Petrol Pump



Hospital

Parking  
This  
SideScooter/  
Motor  
Cycle  
StandCycle  
StandCycle  
Rikshaw  
Stand

No Parking